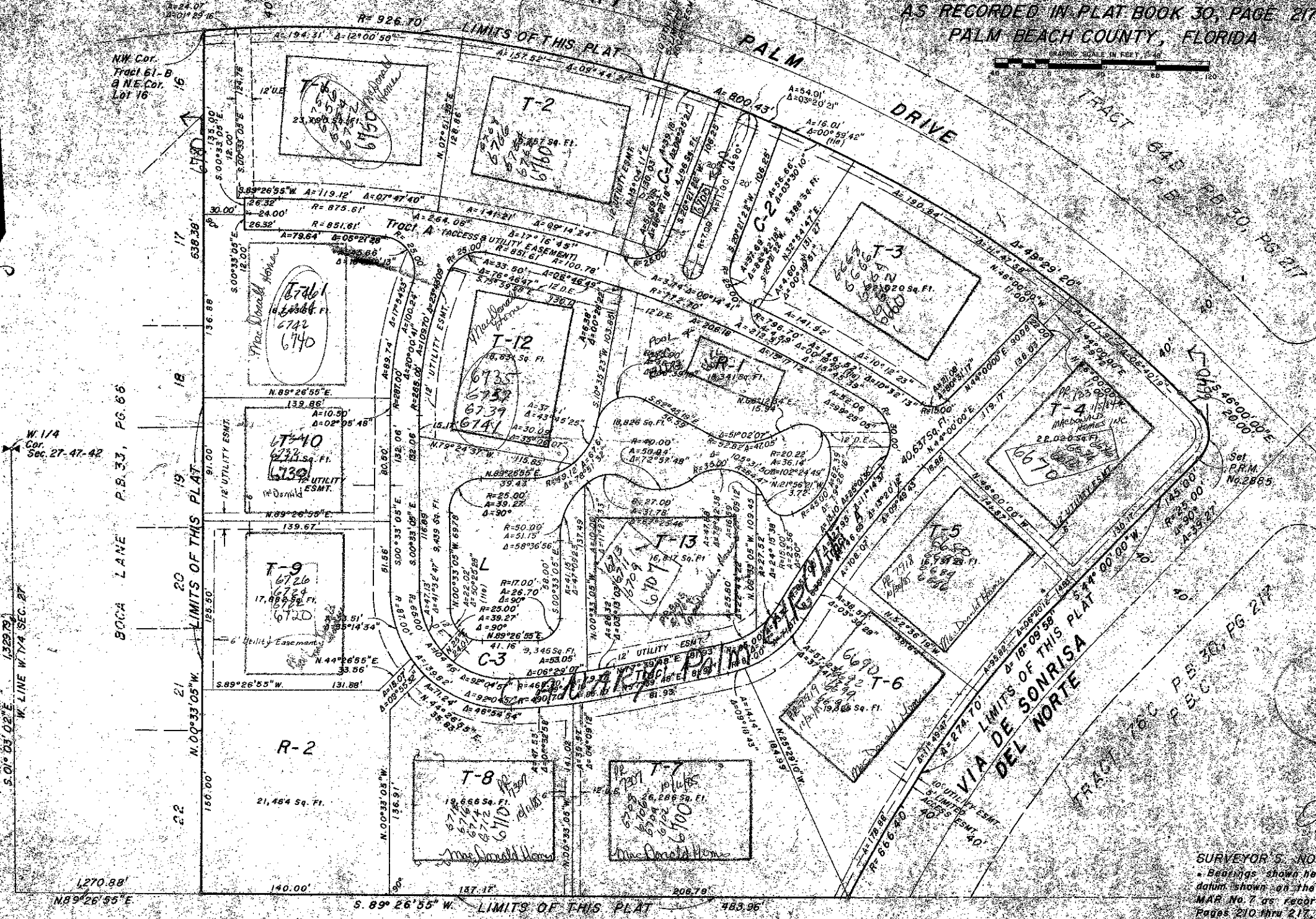


CANARY PALM CLUB

A REPLAT OF A PORTION OF BOCA DEL MAR NO. 7
OF A PORTION OF SECTION 27, TOWNSHIP 47 S, RANGE 42 E
AS RECORDED IN PLAT BOOK 30, PAGE 217
PALM BEACH COUNTY, FLORIDA

103

N



BUILDING LOCATIONS
ARE APPROXIMATE

0205-332

SURVEYOR'S NOTES
 * Bearings shown herein are based on datum shown on the plat of BOCA DEL MAR No. 7 as recorded in Plat Book 30, Pages 210 thru 217, Palm Beach County Records.

** Denotes P.M. (Permanent Reference Monument)

† P.M. is shown in place of monument except where noted.

ACREAGE

PREPARED BY
Darby and Way, P.A.
 PROFESSIONAL LAND SURVEYORS
 8571 W. MCNAB ROAD TAMARAC, FLORIDA

ACREAGE

CANARY PALM CLUB
 39/103